

MSZ-AP/LN/GE/EF/FH & MFZ-KJ/KW Heat Pump Series

7-Day Programmable Timer

- Allows 4 pattern settings per 24-hour period.
- Pattern settings include On/Off and Temperature.
- Different patterns can be set for all 7 days of the week.
- No need to reprogram each day as with a 24-hour timer.

Benefits of the 7-Day Timer

- The 7-Day Timer allows the MSZ-AP, MSZ-LN, MSZ-GE (60/71/80), MSZ-EF, MSZ-FH and MFZ-KJ, MFZ-KW Series to work around your lifestyle, saving both time and energy.
- Room temperature is kept within an economical range (rather than turned up to 27°C to warm faster!), ensuring economical power usage.
- Your home will already be warm when you wake up or return home.

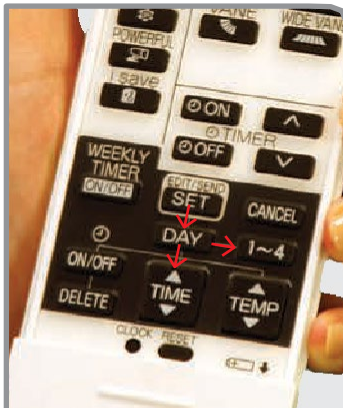


How to use - Example Timer Settings

Weekdays	Time	Heat Pump Operation
	6am	Your heat pump automatically brings the room temperature up to 21°C.
	8am	Your heat pump turns off while the home is unoccupied.
	5pm	Your heat pump turns back on, bringing the room temperature up to 21°C in preparation for your return home.
	11pm	The temperature reduces to 18°C while you are sleeping, for energy saving operation.

Weekends	Time	Heat Pump Operation
	7am	Your heat pump automatically brings the room temperature up to 21°C.
	9am	The temperature reduces to 18°C, as the outside air warms.
	5pm	The temperature automatically increases to 21°C as the outside air drops.
	11pm	The temperature reduces to 18°C while you are sleeping, for energy saving operation.

Programming your 7-Day Timer



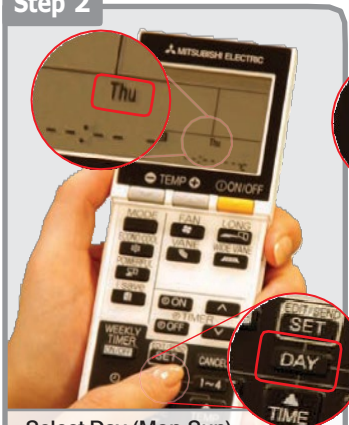
The buttons on the remote controller are set out in the order of how you set the timer. The clock on the remote must be set to the correct time.

Step 1



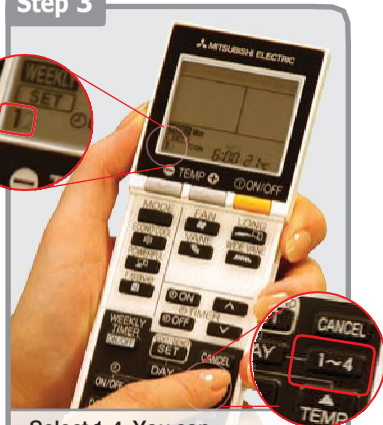
Select the Edit / Send SET button to start setting your timer patterns.

Step 2



Select Day (Mon-Sun). Thursday is selected in the example above.

Step 3



Select 1-4. You can have up to 4 settings per day. Make sure 1 is selected to enter your first setting of the day.

Step 4



Press up / down until desired time / temp is reached

Select ON/OFF. Make sure ON is selected and adjust the time and temperature by pressing the TIME and TEMP buttons. This is a 24-hour clock.

Step 5



To set a time to turn your heat pump OFF on the same day, press 1 - 4, making sure 2 is selected.

Select OFF, set a time to turn off by pressing TIME.

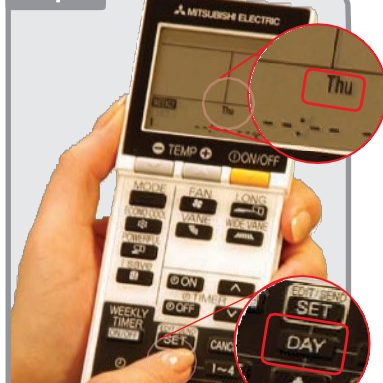
Step 6



To select a 3rd and 4th time for the same day press 1-4 and ensure 3 is selected and repeat step 4.

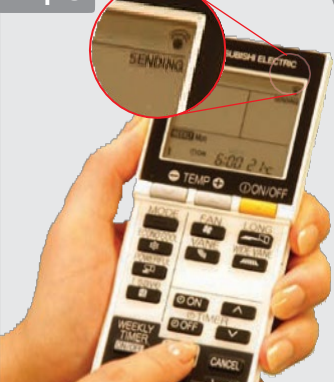
To turn OFF ensure 4 is selected and repeat step 5.

Step 7



To set time for another day, select DAY and repeat steps 3 to 6.

Step 8



Once all ON/OFF Temp requirements have been set select the Edit/Send Button. Point the remote at the heat pump until the "sending" logo disappears.

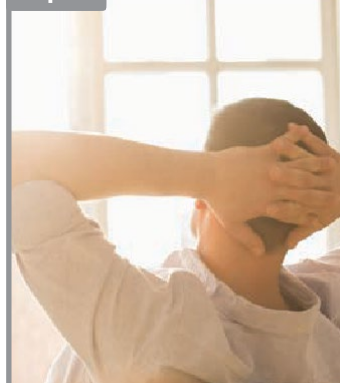
Step 9



To turn your weekly timer ON (or OFF) press the WEEKLY TIMER ON/OFF button.

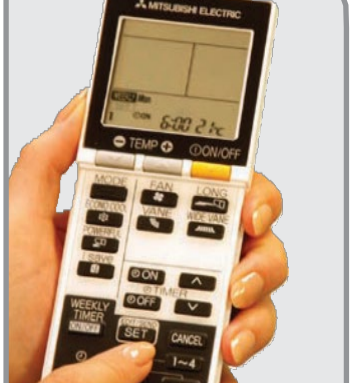
The WEEKLY symbol will show when the timer is on.

Step 10



Relax! Let your heat pump automatically heat your home to your desired temperature.

There's nothing more for you to do until the seasons change!



Override the timer setting at any time by pushing any button on the remote.

Please Note - If left idle for 30 seconds the 7 day timer programming system will reset.